

WYBOSTON LAKES HOTEL

Creating Lasting Impressions

Quick Guide Factsheet



WYBOSTON LAKES HOTEL

Creating lasting impressions

Nestled within 350 acres of rural countryside, alongside the meandering River Great Ouse, Wyboston Lakes is one of the UK's largest, independent destinations; situated on the A1[M], easily accessible and conveniently positioned between Bedford, Cambridge and Peterborough.



Foremost a conference, meeting, training and event venue, offering clients a space to realise their potential - we can deliver a choice of environments; the latest IT or AV equipment; as well as advisory and support services that will impress.



We also offer great hospitality; with an AA Rosette winning restaurant overlooking the lake; spacious lounge bar areas; comfortable hotel accommodation, with the latest services; superb food from award-winning chefs; and atmospheric private dining or event spaces.

In addition, Wyboston Lakes presents a wide range of activities to enhance your visit, ranging from: an 18 hole, par 70 golf course set beside the beautiful lakes; a health club featuring the latest equipment, an exercise studio and wet area; as well as a land and watersports centre for individual or group experiences.



Quick Guide Facts

- Over 5,500m² of venue space with ample parking
- 3 distinct venue centres for either day or residential use
- Over 400 ensuite rooms with modern facilities and services
- AA Rosette restaurant and bar with lakeside setting
- 18 hole, par 70 golf course with 14 bay driving range
- Health and Fitness Club, with 70 state-of-the-art stations and wet area
- Land and Watersports Centre with 2 lakes

WYBOSTON LAKES HOTEL

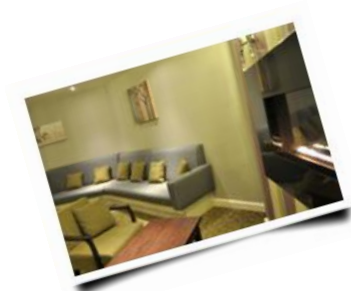
Accommodation

When visiting the area your journey should always start here. You'll find a commitment to service, attention to detail and an outstanding price. Focusing on the comfort and needs of business, our hotel is spotlessly clean, comfortable, and contemporary and features all the modern services you would expect, making it a home away from home.



With 103 ensuite bedrooms offering modern facilities, The Wyboston Lakes Hotel is more than just rooms. Equipped with current amenities, you'll experience friendly staff, a comfortable stay, fresh, locally sourced food and great value for money.

- **The Hotel:** standard or executive ensuite bedrooms (single or double occupancy)
- **Waterfront Restaurant & Bar:** award-winning chefs, lakeside views and atmospheric “zoned” spaces
- **Business Centre:** office space, meeting room and business services available 24/7
- **Venue Suite:** 5,500 M² conference, event and private dining space
- **Connect:** FREE shared wireless 100Mb



Whatever you need our team will strive to exceed your expectations - room only or bed & breakfast; with an office space or a meeting room; a relaxed dinner in the bar or a formal business private dining experience.



Standard Accommodation

All of our bedrooms are tastefully decorated providing a warm and cheerful environment to make you feel at home. In addition, they are extremely well soundproofed, ensuring that you get a good night's sleep.

- **Sleep:** double bed, contemporary furnishings with sound insulation
- **Comfort:** individual heat control
- **Relax:** ensuite bathroom and complimentary toiletries
- **Unwind:** 21" flat screen with 'Freeview' channels
- **Refresh:** tea and coffee facilities
- **Dress:** hairdryer, iron and ironing board
- **Groom:** well-lit dresser and mirror
- **Chat:** Telephone
- **Secure:** site security, gadget and valuables safe
- **Extras:** dry cleaning, in room add-ons or experiences for an additional charge
- **Surf:** FREE shared wireless 100Mb*
- **Park:** FREE ample parking
- **Store:** FREE luggage storage



Executive Accommodation

These rooms have a contemporary style of décor and a higher standard of furnishings. Our executive double rooms offer a king size bed for that perfect night's sleep, and we also offer guests the choice of executive twin and triple rooms. Executive Rooms enjoy all the benefits of a standard room PLUS ...

- **Rest:** larger beds, chairs and table
- **Comfort:** lounge space and higher standard of furnishing



Waterfront Restaurant & Bar

Producing AA Rosette standards, the team in the Waterfront Restaurant & Bar will do their utmost to impress you. Choose from a variety of fresh dishes, a great wine list, combined with this contemporary designed space - this will be an experience like no other.

Designed with the needs of the business in mind - a formal business lunch, a celebration with colleagues or an informal meeting over afternoon tea - you'll enjoy an exceptionally high level of food and hospitality. The restaurant is a la carte throughout lunch and evening service and our friendly, efficient hospitality team will ensure you receive a first class meal even if you are on a tight schedule.

The menu offers a wide range of contemporary eclectic dishes supported by "Specials" prepared daily. Sunday Lunch is also available in the Waterfront Restaurant.



The decor is modern yet non-imposing and our panoramic windows offer spectacular views of the lake and fountains. The bar has deep set chairs and booths, coupled with lounge tables for easy eating; whereas the restaurant offers hessian chairs and dark panelled tables for a more formal experience.

Low lighting and soft music create great ambience and really set the tone.



The Waterfront Bar has a cosy, laid back atmosphere to it, with big screen TV's showing the latest Sky sports channels and an all day easy eating menu designed for the more nonchalant business lunches.

Breakfast (English and Continental)	(Mon – Fri)	07:00 – 09:00
	(Sat & Sun)	07:00 – 10:00
Golfer's Menu	(Mon - Sun)	07:00 – 08:00
Easy Eating Menu	(Mon – Sun)	07:00 - 21:30
Waterfront Restaurant	(Tue – Sat)	12:00 - 14:30
	(Mon – Sun)	18:30 – 21:30
	(Sun)	12:00 - 15:30

Private Dining and Events

If you need a contemporary, classically designed, private dining space for an important occasion, we offer the Kingfisher and Lakeview Private Dining Rooms. You'll also be assured of outstanding service and fantastic menus to ensure a successful event. We are happy to accommodate your preferences and needs.

Whether you are entertaining clients or colleagues, the Kingfisher Room is a contemporary designed private space - ideal for personalised dining events that demand a unique atmosphere.

- **Space:** seats 9 - 26 people
- **Cuisine:** presenting à la carte lunch and dinner menus
- **Atmosphere:** private, formal and intimate
- **Design:** classically designed space with a modern twist
- **Comfort:** French Oak table with dresser and ergonomic seating
- **Entertain:** 42" plasma screen TV (on request)

Alternatively, if you're looking to create a special experience, the Lakeview Room is a light and open space, which can be rearranged to a variety of layouts suitable to the demands of the unforgettable event.

- **Space:** seats 20 - 60 people
- **Cuisine:** presenting a selection of private dining menus
- **Atmosphere:** private, informal and overlooking the lakes
- **Design:** a light, open and classically designed space
- **Comfort:** leather seating, beautifully presented with white lined
- **Entertain:** 42" plasma screen TV or Data Projector and Screen (on request)

Things To Do

Harpers Health and Fitness Club

Work it out in Harpers gym and exercise studio featuring the latest equipment. To chill out, hit the pool or head to the Jacuzzi, sauna and steam rooms. Why not treat yourself to a revitalising massage or a beauty treatment from The Beauty Clinic? If you want a one-to-one training session, our personal trainers will put you through your paces and help you to achieve your fitness goals.



Land and Watersports Centre

If you're looking for a rush, or some easy-going fun, check out our land and watersports centre. From jet skiing to water skiing, to quad biking or 4X4 off road experiences - we have something for the adrenaline junkies and the more laid-back!



Wyboston Golf Course

Our 18 hole, 70 par golf course is perfect for the complete novice to the experienced golfer. With golf Professionals at hand to offer one-to-one lessons or a 14 bay all weather, flood lit driving range to practise your technique - this is 'pay and play' golf beyond expectations.



Nature Reserve

The Begwary Brook Nature Reserve offers attractive marsh and open pools, next to the meandering River Great Ouse. Riverside marshes such as this are now rare because of large scale drainage over recent years.

This area was once a large marsh fed by the River Ouse, but in the 1960s gravel extraction created a small lake and a series of pools in the small area of marsh which survives today. In summer, dragonflies and damselflies hawk over the marsh, looking for an easy meal.

- **Winter:** reed bunting and foxes
- **Spring:** marsh marigold, cuckoo flower, orange tip butterflies, sedge, reed/willow warblers, and blackcaps
- **Summer:** wild angelica, purple loosestrife, marsh woundwort, grass snakes and kingfishers
- **Autumn:** goldcrests

Fishing

The South Lagoon

(Members and Day-Tickets: 28 Pegs on the lake: Night Fishing is permitted: Open All Year: 2 rod Max.) The lake is home to most species of fish with Bream to double figures and if you hit a shoal bag of 100lb plus have been reported. There are also tench to 10lb+, perch to 4lb, roach of 1-2lb, pike to 32lb, zander to 16lb+, carp to 33lb. There is also a rumour of a 39lb mirror carp.



The River Great Ouse

(Members and Day-Tickets: 15 Pegs on the lake: Night Fishing is permitted: Close Season 15 March to 15 June inclusive.) There have been many double figure carp taken from the upstream end of the fishery and chub are regularly taken often with multiple catches of fish of 5-6lb being reported.

- **Adult:** Day £6.00 and Night £10.00
- **Concession:** (Under 16 yrs, OAP and Disabled) Day £3.00 and Night £5.00.
- **Booking:** Luton Angling Club
- **Bailiffs:** Terry Willison and Fred Hodson

Sightseeing

Wyboston Lakes, conveniently located midway between Cambridge and Bedford, is the perfect base for a discovering the secrets of Cambridgeshire and Bedfordshire.

- **Heritage:** Knebworth House, Wimpole Hall or Hatfield House
- **Active:** Whipsnade Park, Snow and Ski Dome, Woburn Safari Park or Grafham Water
- **Interest:** Duxford Imperial War Museum, Bletchley Park, the Shuttleworth Collection Old Warden Park, Swiss Garden
- **Sightseeing:** Bedford, Cambridge or Peterborough

WYBOSTON LAKES HOTEL

Travel Information

By Rail

The nearest rail station to Wyboston Lakes is St. Neots, on the First Capital Connect on the Great Northern Line, a 48 minute journey from London King's Cross. St Neots and Sandy Train Stations are only a 10 minute drive away.

Road : from North or South

Leave A1 at A428 junction (signposted Cambridge) just South of St. Neots. From North, take third exit at roundabout. From South, take fourth exit at roundabout (back towards A1). Entrance to Wyboston Lakes is 60 yards on the left.

Road : from East

A428 (from Cambridge and M11) before A1 junction, take first exit at roundabout. Entrance to Wyboston Lakes is 60 yards on the left.

Road : from West

A421 (from Bedford), join A1 North. Leave at A428 junction (signposted Cambridge) just South of St. Neots. Take fourth exit at roundabout (back towards A1). Entrance to Wyboston Lakes is 60 yards on the left.

Address

- Wyboston Lakes
Great North Road
Wyboston
Bedfordshire
MK44 3AL

Taxi Companies

- Consort Taxis
+ 44 (0)1480 380 545
- Steve's Taxis
+ 44 (0)1480 215 666
- Anglian Taxis
+ 44 (0)1480 475 222

Airports

- Luton Airport
45 minutes
- Stansted Airport
45 minutes
- Heathrow Airport
1.5 hours

WYBOSTON LAKES HOTEL

0333 7007 667

Getting in touch

“ ... we will always look after our customers and exceed their expectations, so that we are their first choice and they unreservedly recommend us to others ...”

Sales and Reservations [option 1]

Conference, training, meetings and Christmas parties
Hotel Reservations, short breaks and social Events
Private Events and Weddings
Waterfront Restaurant & Bar

Wyboston Lakes Golf Course [option 2]

Golf Pro Shop
Tee Times
Golf Societies and Groups
Season Tickets

Management and Accounts [option 3]

Other Enquiries [option 4]

0333 Numbers

The same cost as a Landline Number BUT the price is also the same for calls from Mobile Phones.

Dialling from outside the UK

Please call +44 (0)1480 212625.

Address

- Wyboston Lakes
Great North Road
Wyboston
Bedfordshire
MK44 3AL

Hotel Reservations

- 0333 7007 667
reservations@wybostonlakes.co.uk
8.00am to 10.00pm GMT/BST
364 days a year

Event Reservations

- 0333 7007 667
sales@wybostonlakes.co.uk
8.30am to 5.30pm GMT/BST
Monday - Friday

Website

- www.wybostonlakes.co.uk